

803XA-0620

INSTALLATION MANUAL

GENERAL PRECAUTIONS FOR INSTALLERS

Below are the general safety warnings for installation.

Read the instruction manual carefully before beginning the installation and carry out the procedures as specified by the manufacturer. • All operations indicated in this manual must be carried out exclusively by skilled and qualified personnel and in full compliance with the regulations in force. • Make sure the mains power supply is disconnected during all installation procedures. • Only use this product for its intended purpose. Any other use is hazardous. • The manufacturer cannot be held liable for any damage caused by improper, unreasonable or erroneous use. • Keep this information.

DISMANTLING AND DISPOSAL

Dispose of the packaging and the device responsibly at the end of its life cycle, in compliance with the laws in force in the country where the product is used. The recyclable components are marked with the material symbol and ID.

THE DATA AND INFORMATION IN THIS MANUAL MAY BE CHANGED AT ANY TIME AND WITHOUT NOTICE.

MEASUREMENTS ARE IN MILLIMETRES, UNLESS STATED OTHERWISE.

PRODUCT DATA AND INFORMATION

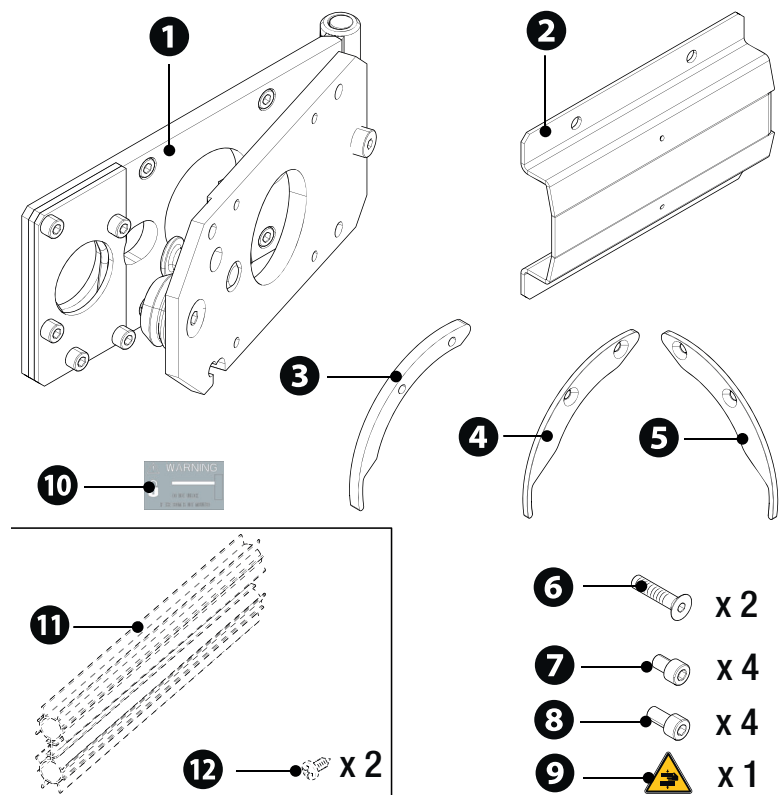
Description

Detachable boom attachment 90 x 35 mm.

After impact, the pivoting coupling releases the boom and the end rests on the ground.

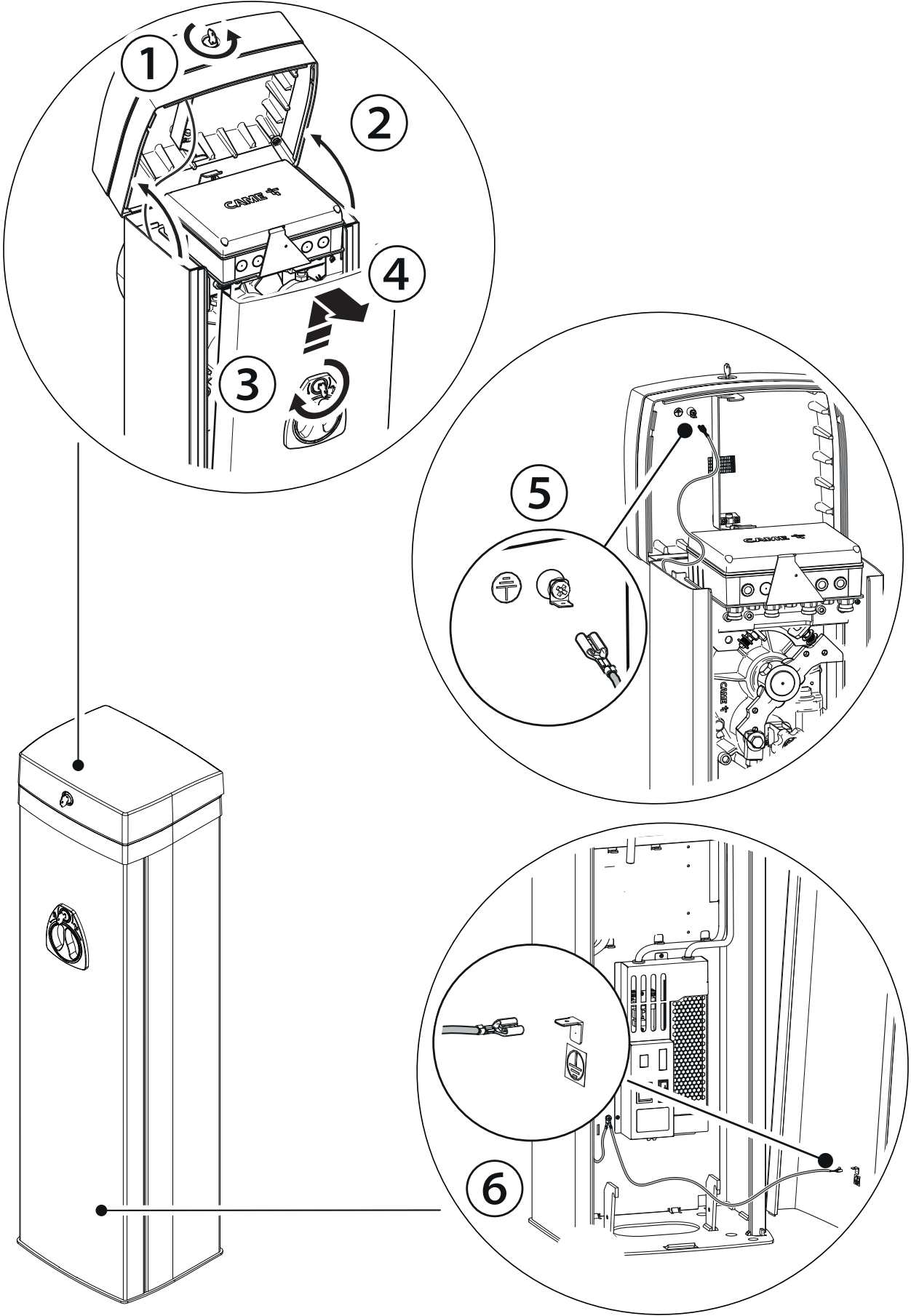
Description of parts

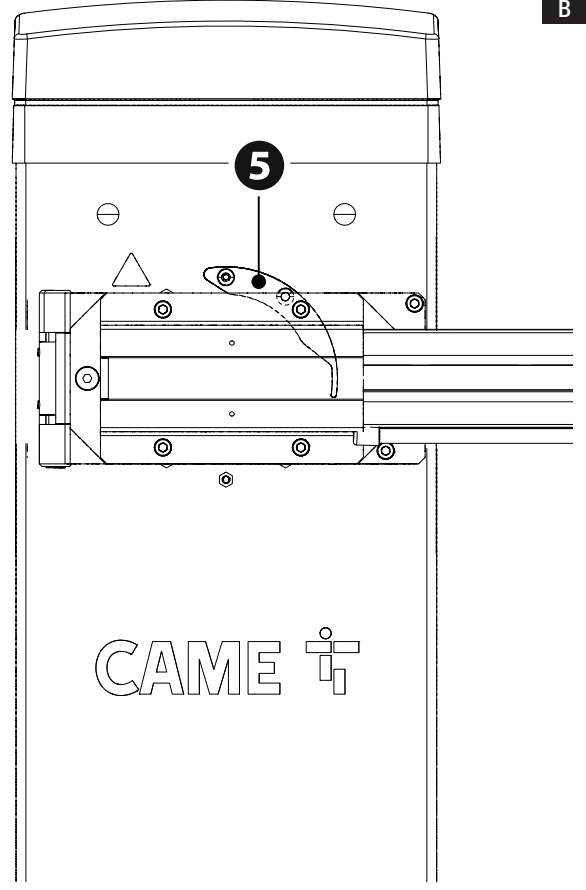
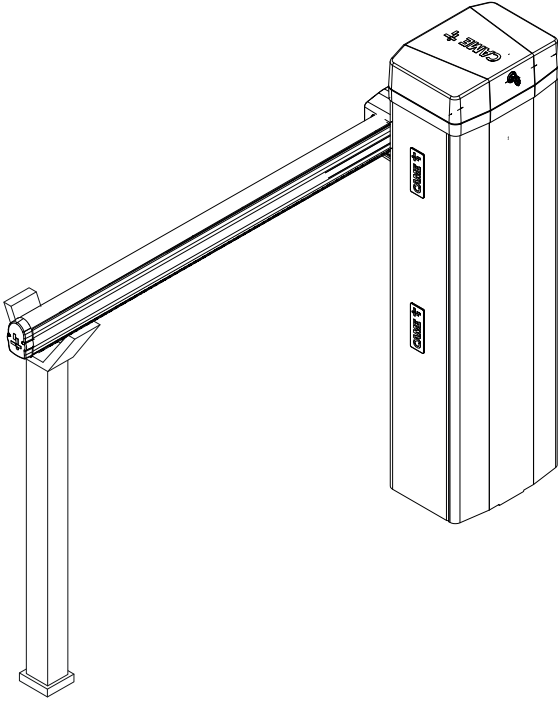
- ❶ Detachable boom attachment
 - ❷ Fastening flange
 - ❸ Lower securing half-ring
 - ❹ Upper securing half-ring
 - ❺ Upper securing half-ring
 - ❻ Countersunk screw M8x35
 - ❼ Cylindrical head screw M8x12
 - ❽ Cylindrical head screw M8x16
 - ❾ Danger of hand crushing adhesive pictogram
 - ❿ Danger adhesive pictogram for manual release with boom attachment detached
 - ⓫ Boom reinforcement (*)
 - ⓬ Self-tapping screw 4.8x13
- (*) Accessory supplied with boom



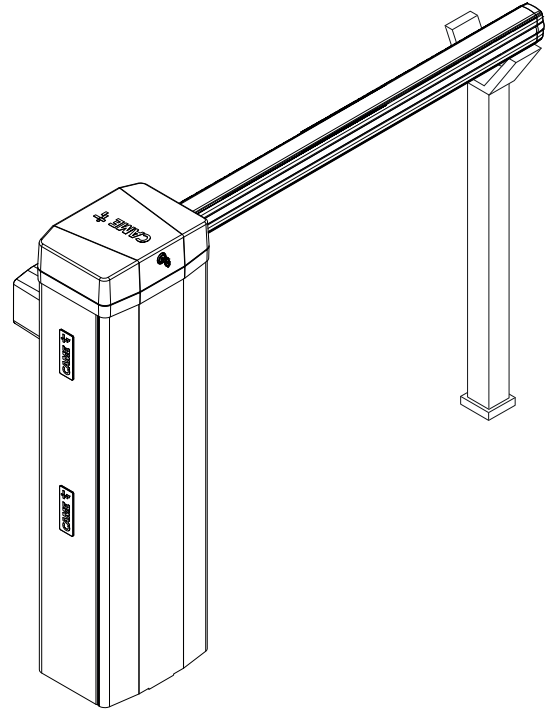
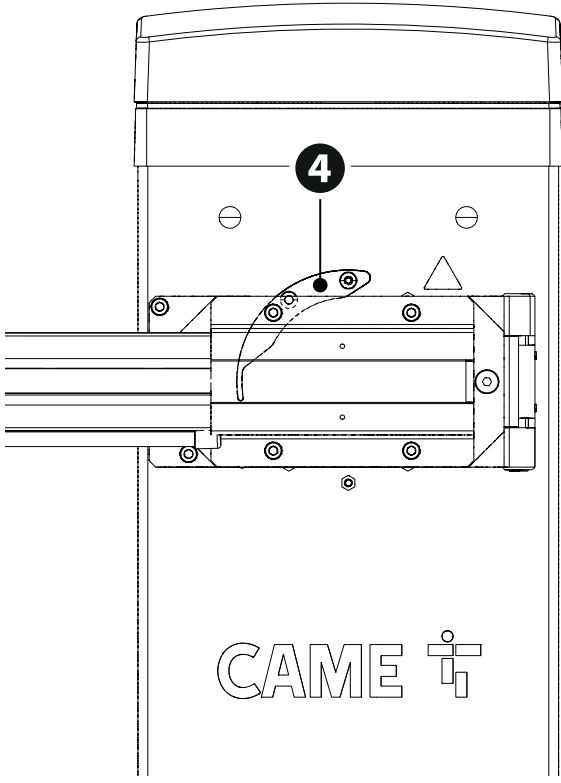
Technical data

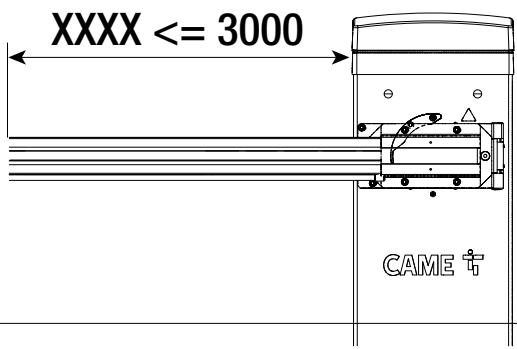
MODELS	803XA-0620
Release torque (Nm)	250-350



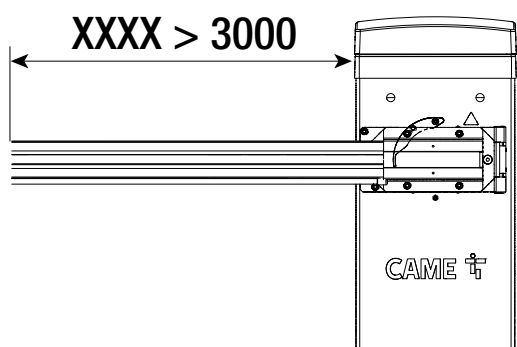
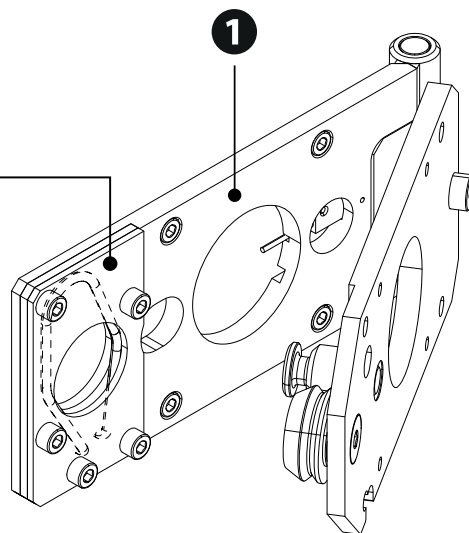
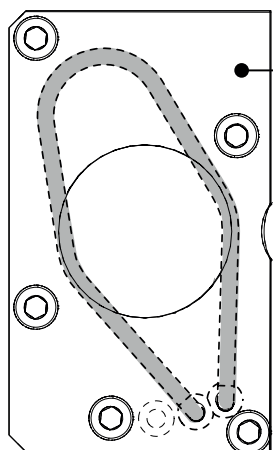


B

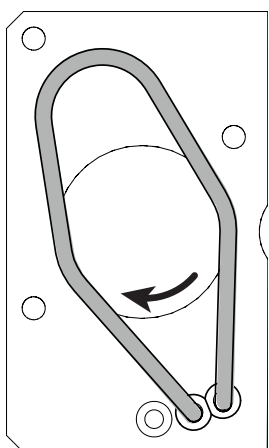




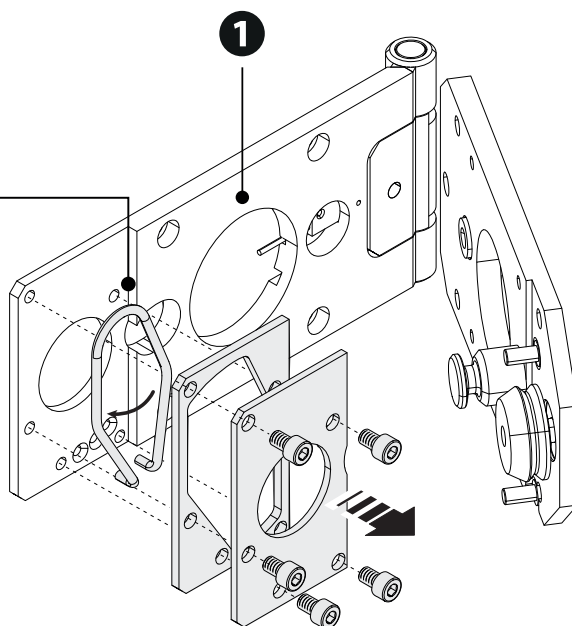
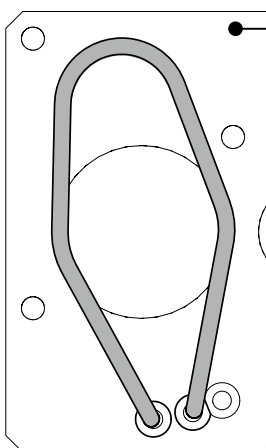
DEFAULT

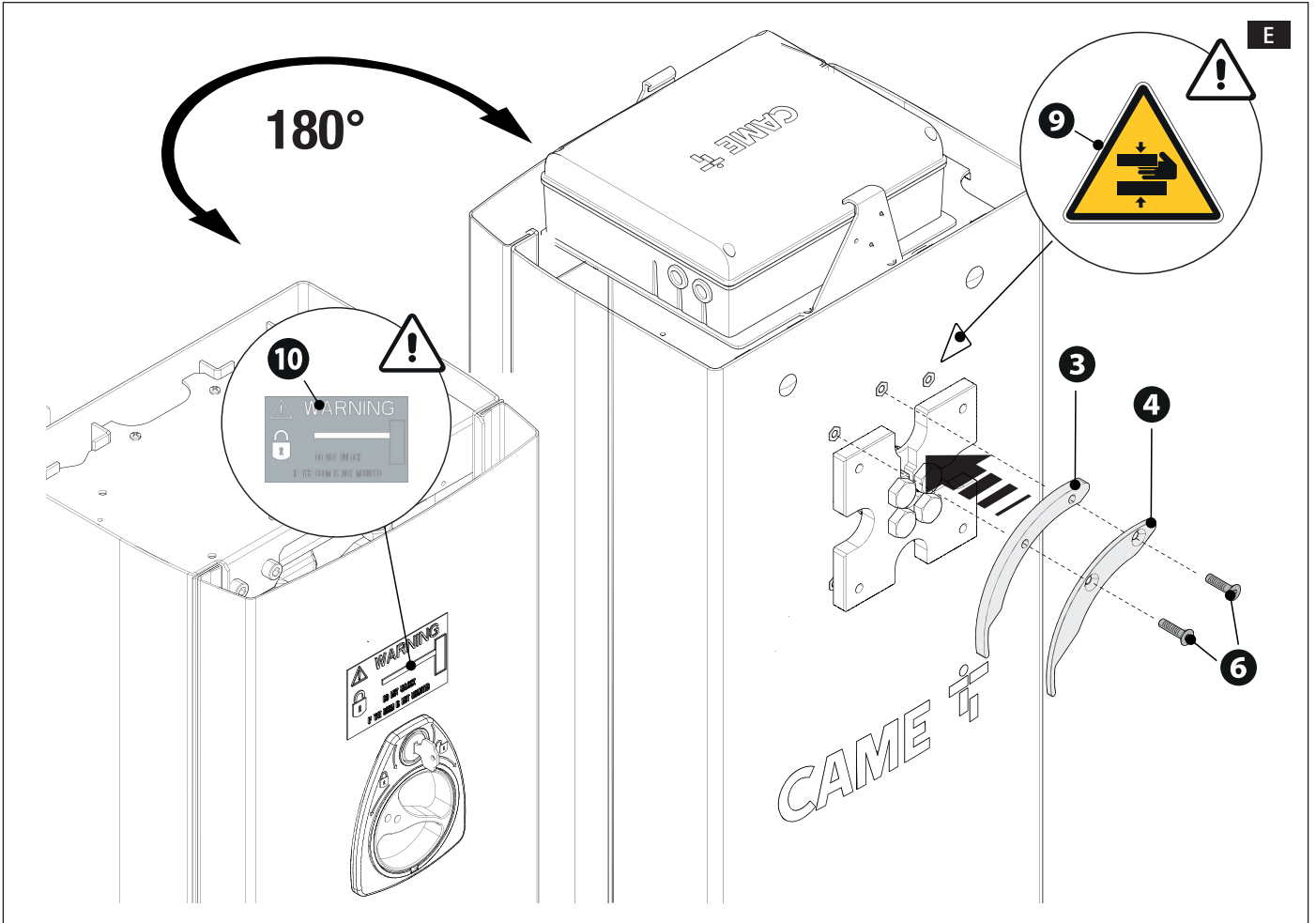
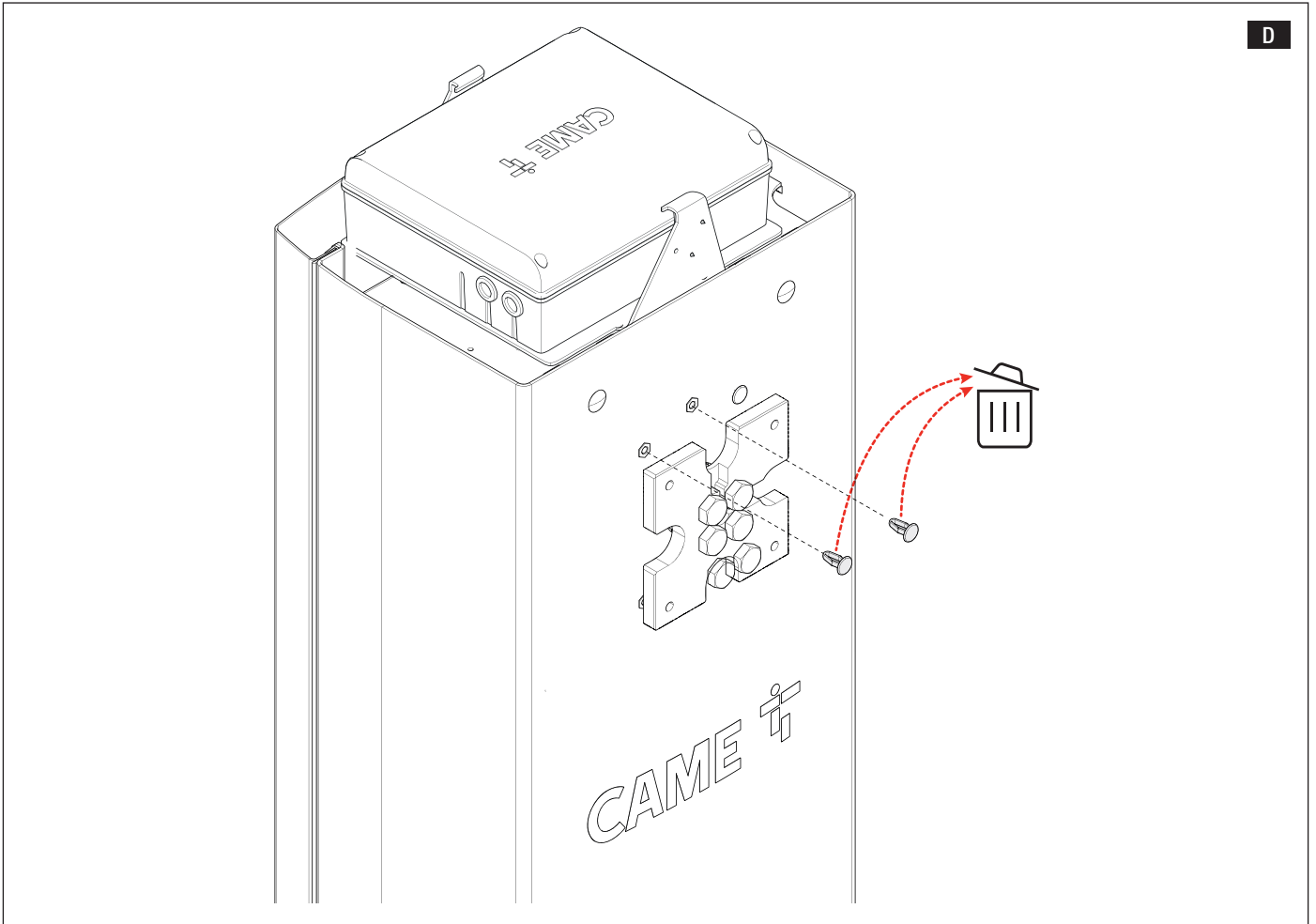


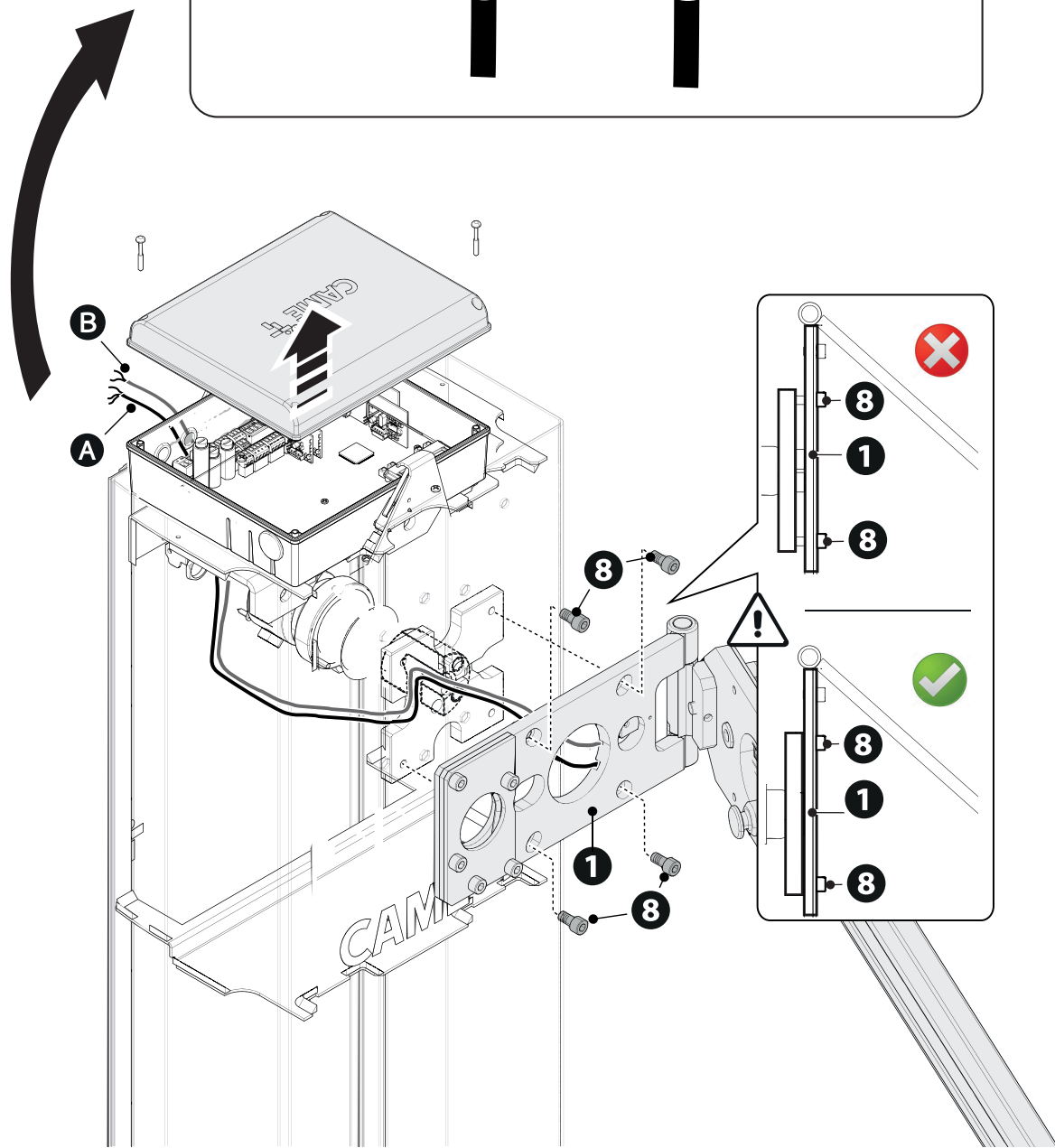
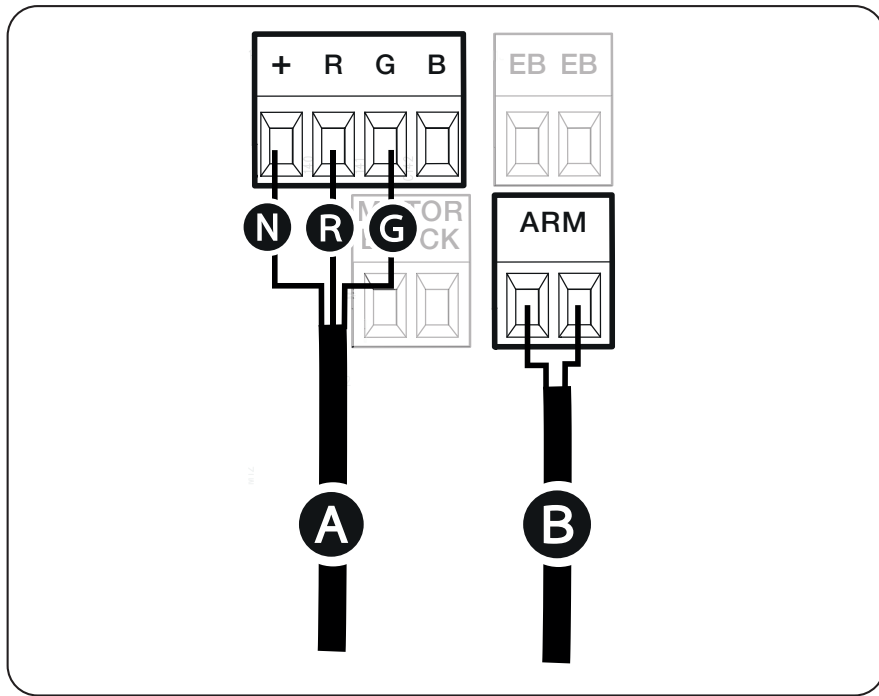
①



②

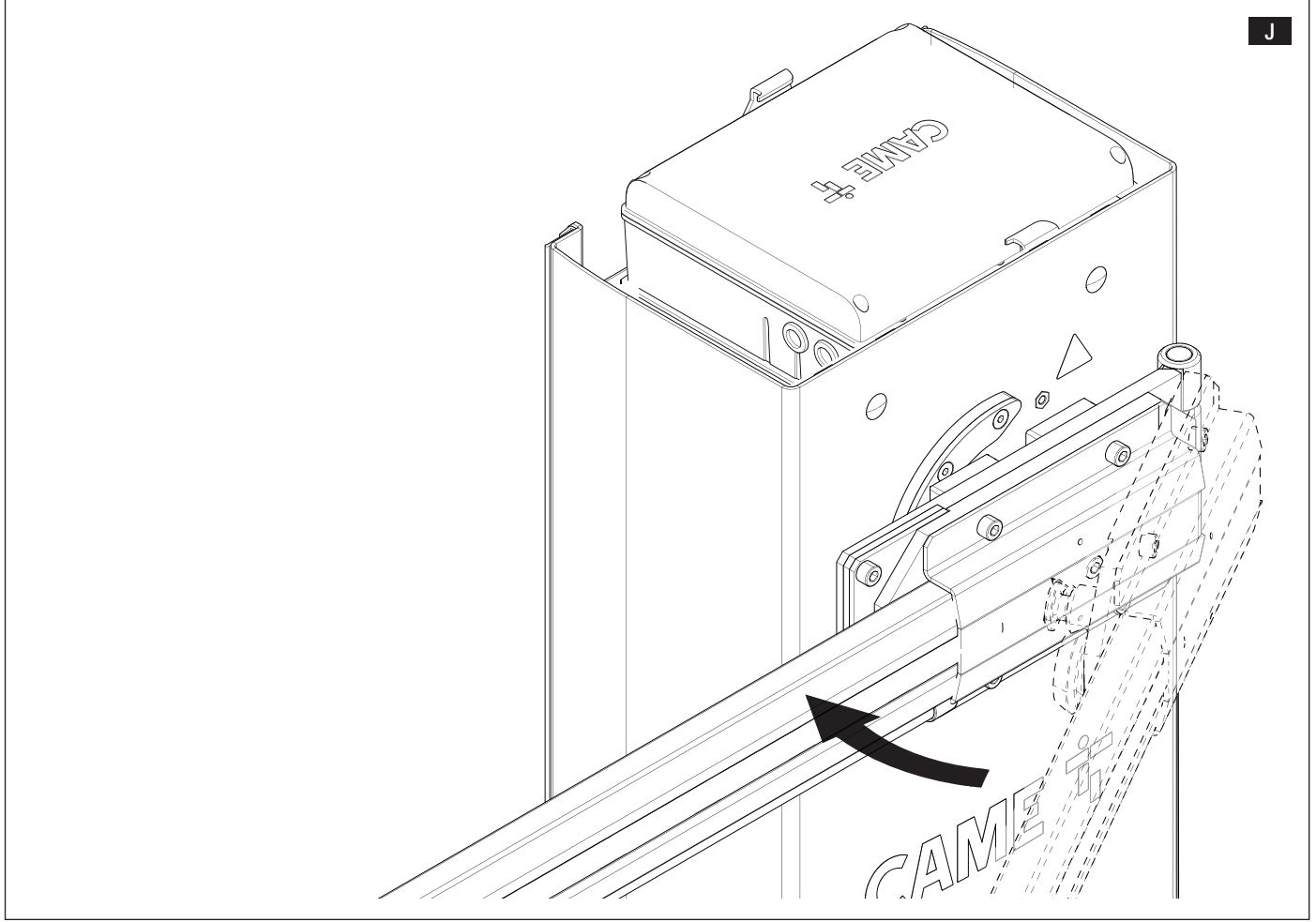
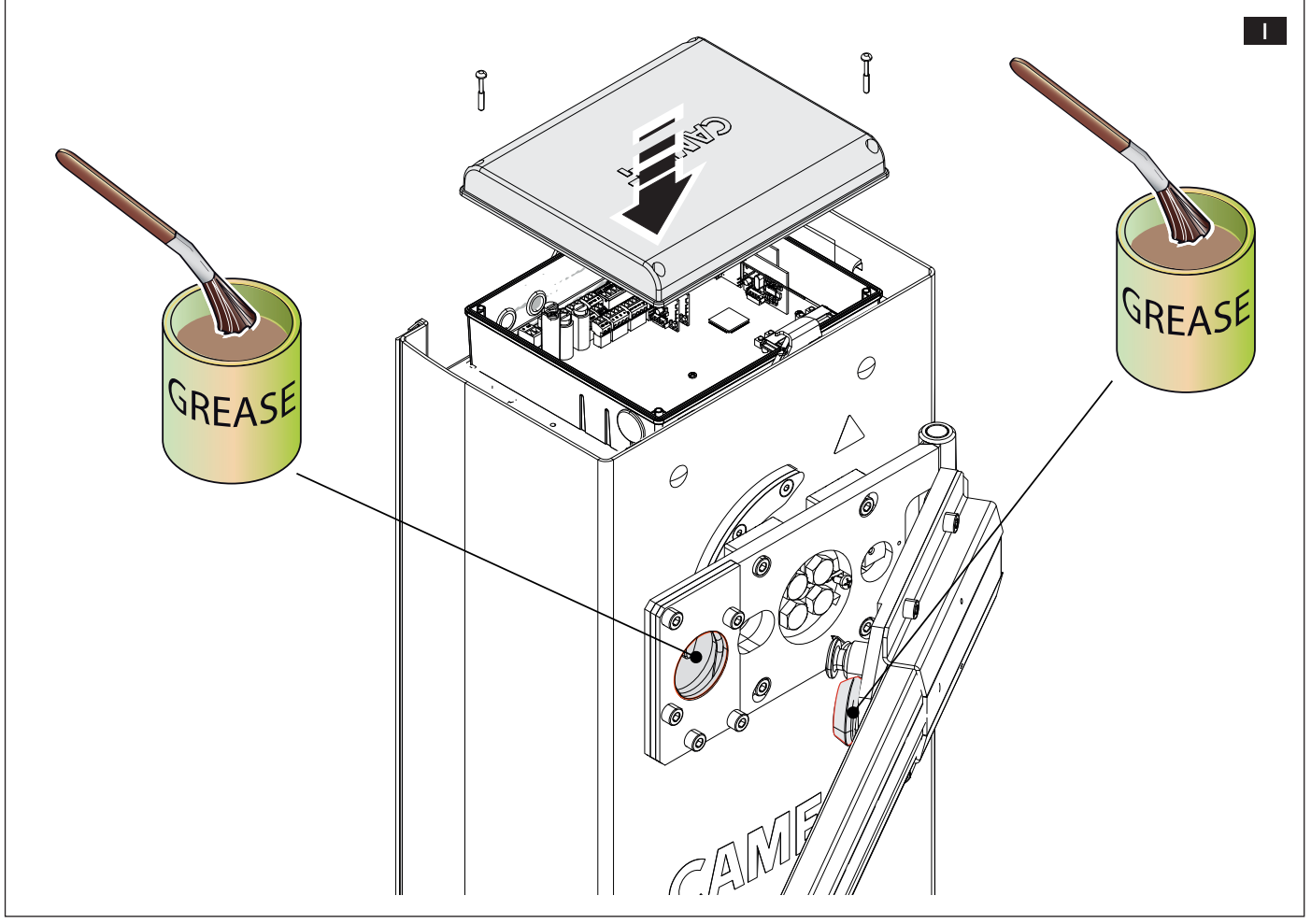


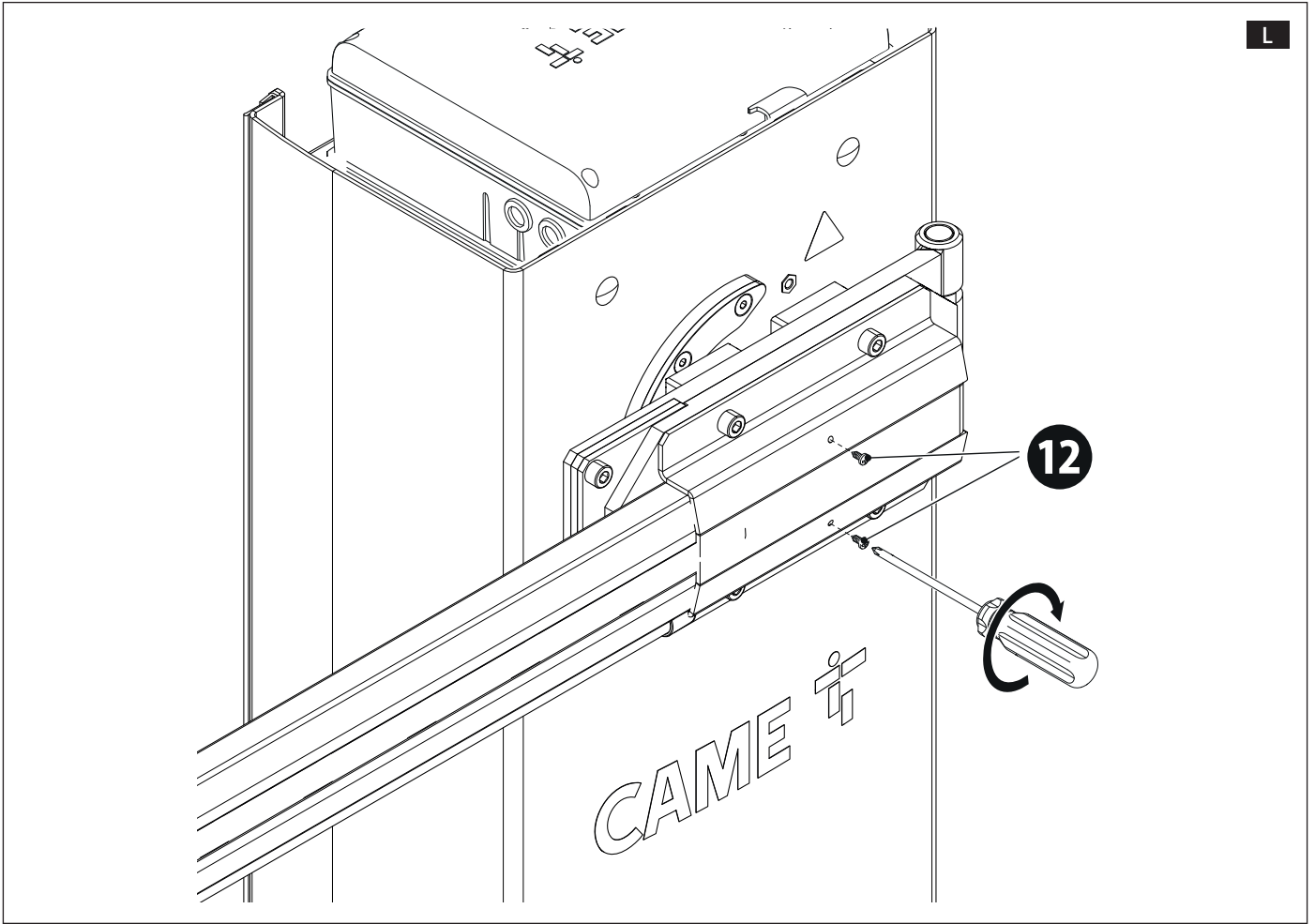
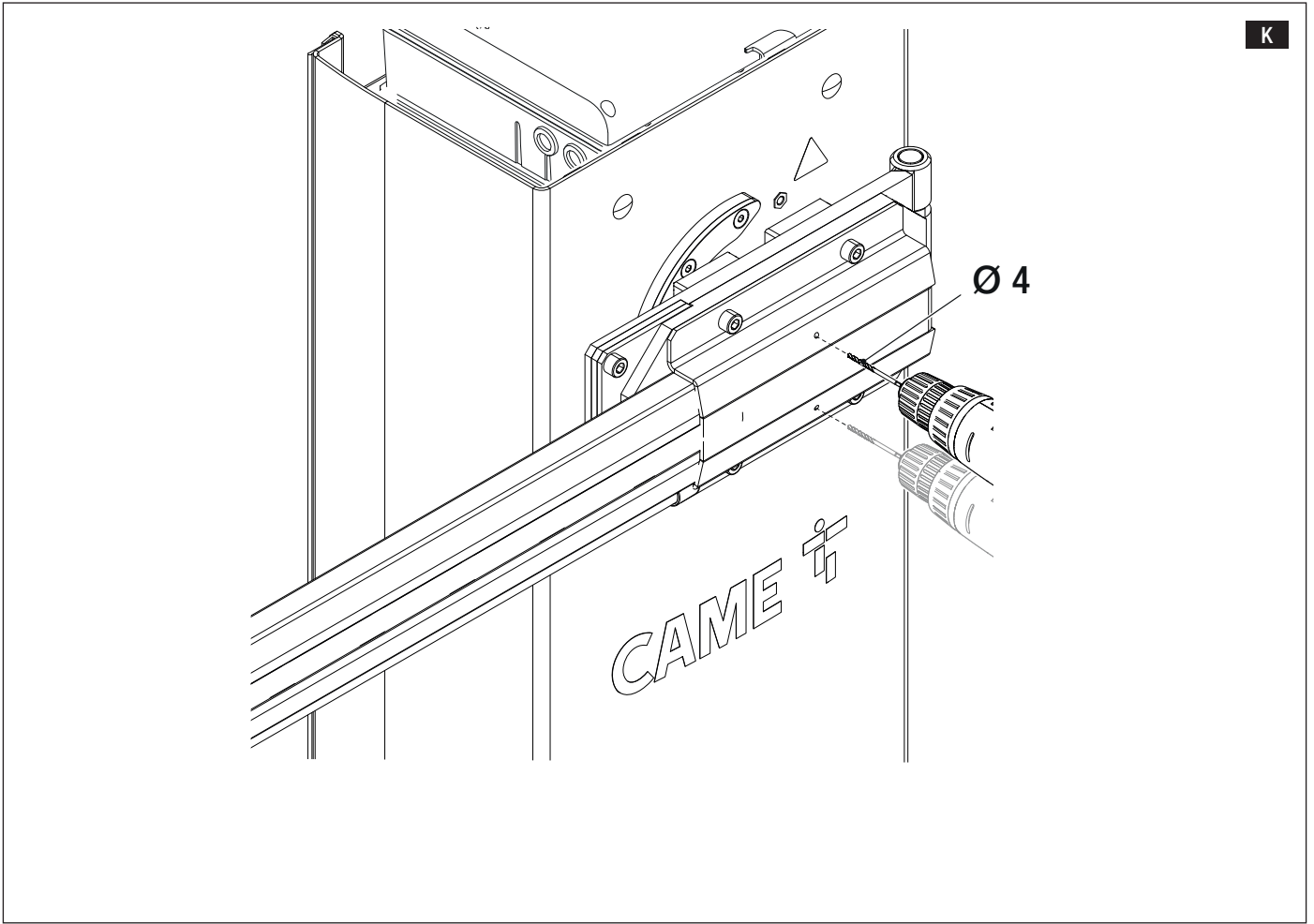




- A LED strip cable
- B Detachable boom attachment microswitch cable

- H Black cable
- R Red cable
- G Yellow cable





MAINTENANCE

⚠ Before carrying out any cleaning or maintenance, or replacing any parts, disconnect the device from the power supply.

⚠ This document informs the installer of the checks that must be carried out during maintenance.

📖 Every 500,000 cycles and, in any case, every 6 months of operation, you must perform the maintenance work indicated below.

Perform a general and complete check of the tightness of the nuts and bolts.

Grease all of the moving mechanical parts.

Check the warning and safety devices are working properly.

Check that the microswitch connected to the cabinet cover is working correctly.

Check the microswitch connected to the manual release is working properly, and the microswitch connected to the release accessories (optional).

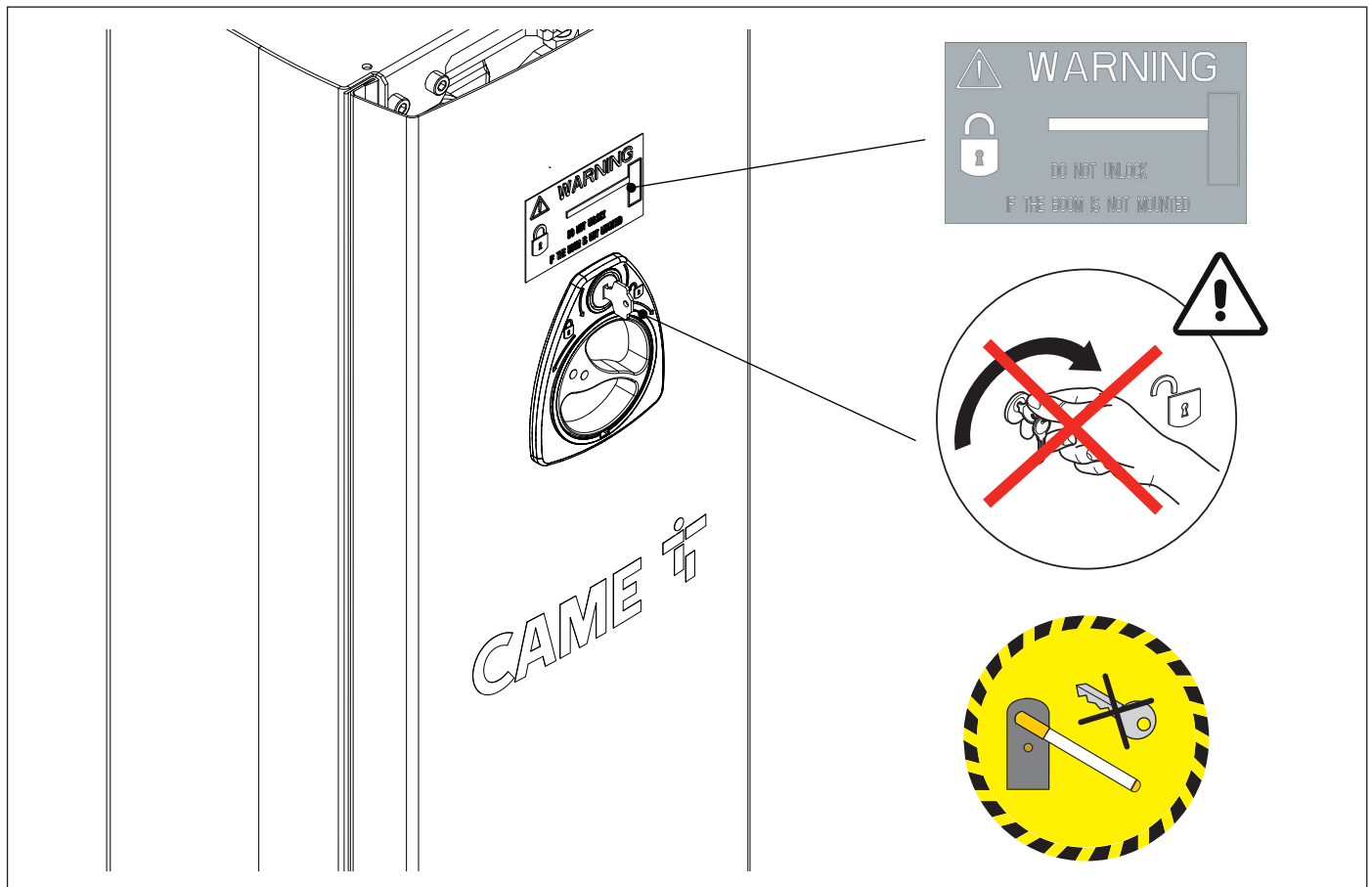
Check for any wear on the moving mechanical parts and check that they are working properly.

Check the cables are intact and connected correctly.

DEVICE MANUAL RELEASE

⚠ Releasing the device may be dangerous for the user, if the boom fastening has been damaged or if the boom is no longer intact, as the result of an accident or installation error. In these cases, the tensioned springs no longer guarantee that the boom is balanced. The boom may suddenly rotate when being released.

⚠ Manual release may cause the operator to move in an uncontrolled manner due to a mechanical fault or an imbalance.





CAME.COM

CAME S.P.A.

Via Martiri della Libertà, 15

31030 Dosson di Casier

Treviso - Italy

Tel. (+39) 0422 4940

Fax (+39) 0422 4941

info@came.com - www.came.com